

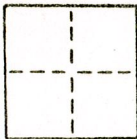
CORNER RECORD

01

COUNTY OF SACRAMENTO T. 8N. R. 6E. M.D.M. MERIDIAN CALIFORNIA

CORNER TYPE: GOV'T. CORNER MEANDER RANCHO CONTROL OTHER

CORNER IDENTIFICATION — DATE OF VISIT _____ 19____



6 PM 21, Pcl A

CORNER — LEFT AS FOUND FOUND AND TAGGED - REESTABLISHED OBLITERATED CORNER REBUILT

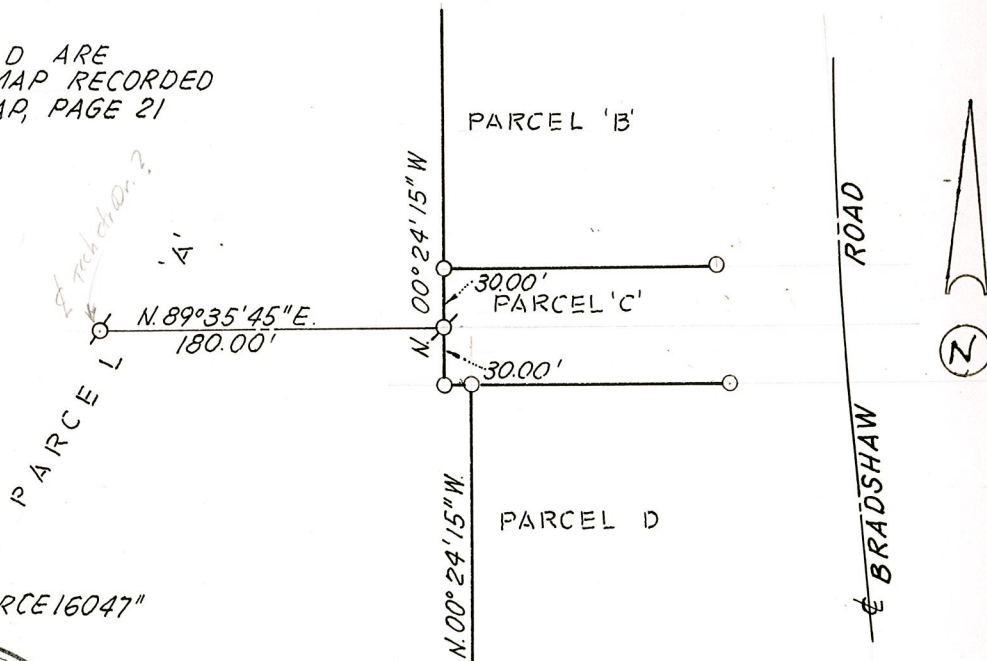
PHYSICAL DESCRIPTION OF CORNER FOUND; EVIDENCE AND METHOD USED TO IDENTIFY OR REESTABLISH

PHYSICAL DESCRIPTION OF MONUMENTS REBUILT OR PERPETUATED

CALIFORNIA COORDINATE SYSTEM ORDER: FIRST SECOND THIRD
STATIONS USED: NGS (USC & GS) STATE COUNTY OTHER STATION _____ STATION _____
ZONE _____ ELEVATION _____ NORTHINGS (Y) _____ EASTINGS (X) _____

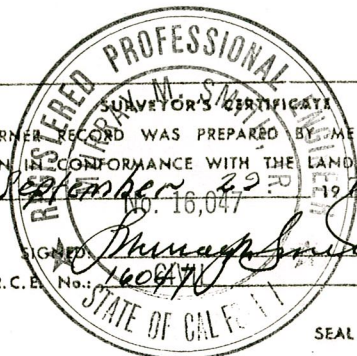
SKETCH: (Include reference tie or witness points, remarks and topo of area)

NOTE: PARCELS A, B, C, & D ARE AS SHOWN ON PARCEL MAP RECORDED IN BOOK 6 OF PARCEL MAP, PAGE 21



LEGEND:

♂ SET 3/4" I.P. W/PLUG "RCE16047"



THIS CORNER RECORD WAS PREPARED BY ME OR UNDER MY DIRECTION IN CONFORMANCE WITH THE LAND SURVEYORS ACT ON September 22, 1978 No. 16,047

SIGNED [Signature] I.S. or R.C.E. No. 16047

SEAL

COUNTY SURVEYOR'S CERTIFICATE

THE CORNER RECORD WAS RECEIVED _____ 19____ AND EXAMINED AND FILED _____ 19____ BY: _____ TITLE: _____

DOCUMENT No. 1

STATEMENT ON BACK OF SHEET YES NO